



Best Master Furniture™
The Imported Furniture Specialist



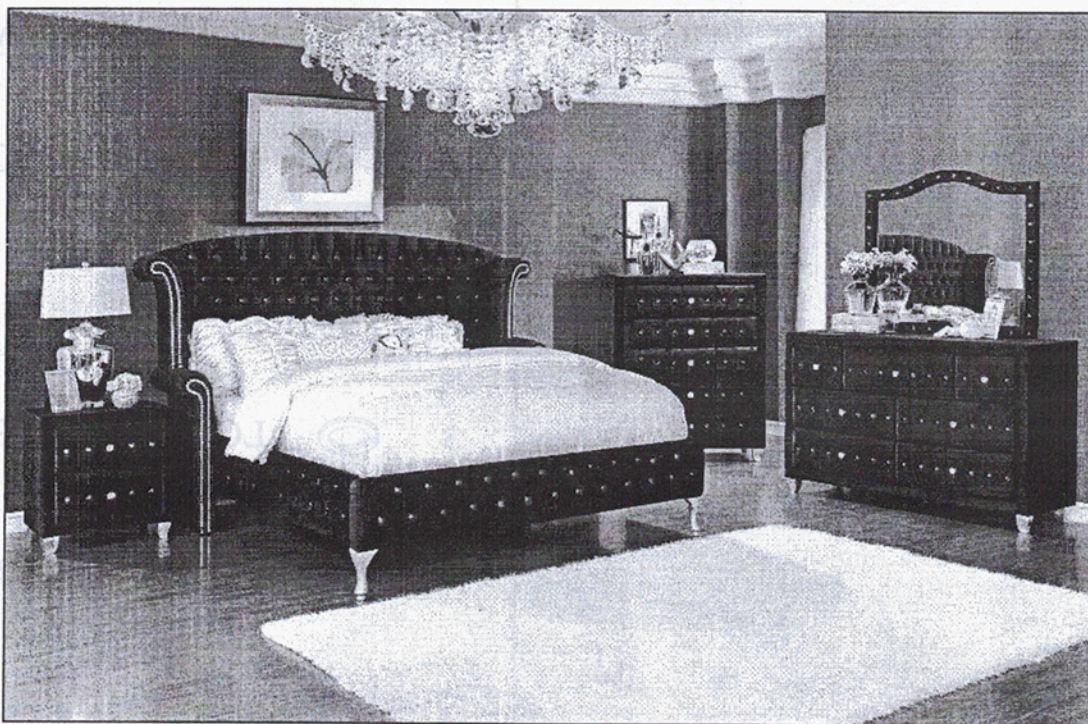
Best Master Furniture™

The Imported Furniture Specialist

B1981B/B1981G-N

NIGHT STAND

ASSEMBLY INSTRUCTIONS





ASSEMBLY TIPS:

1. Remove hardware from box and sort by size.
2. Please check to see that all hardware and parts are present prior to start of assembly.
3. Please follow attached instructions in the same sequence as numbered to assure fast & easy assembly.



Warning !

1. Don't attempt to repair or modify parts that are broken or defective. Please contact the store immediately.
2. This product is for home use only and not intended for commercial establishment.


ASSEMBLY TIME
5 MINUTES

PARTS IDENTIFICATION

A NIGHT STAND 1PC



B LEG 4PCS




HARDWARE IDENTIFICATION

1  ALLEN WRENCH 1PC

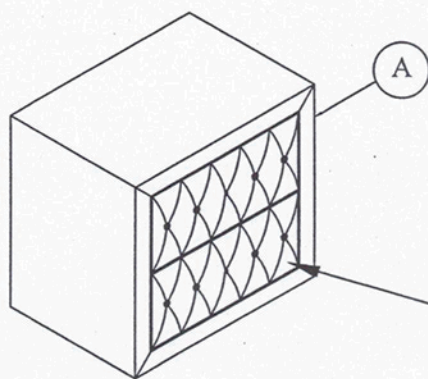
2  BOLT 4PCS

3  LOCK WASHER 4PCS

4  FLAT WASHER 4PCS

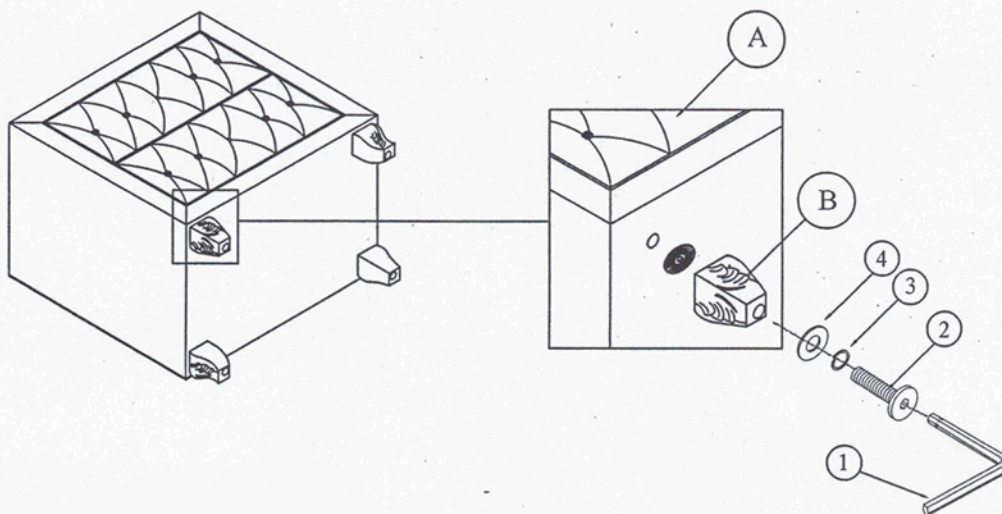
NOTE : PHILLIPS HEAD SCREW DRIVER IS REQUIRED IN THE ASSEMBLY PROCESS ; HOWEVER , MANUFACTURER DOES NOT PROVIDE THIS ITEM .

STEP 1



Please take out the legs from the last drawer

STEP 2



STEP 3

