



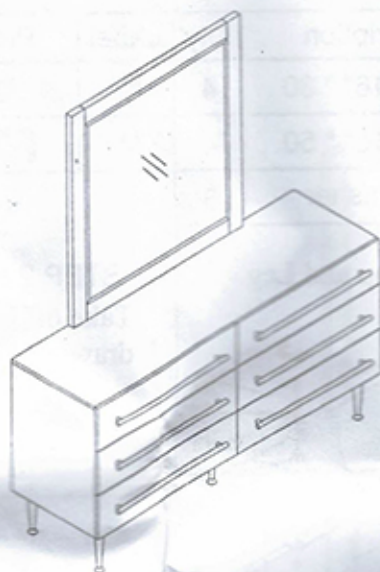
Best Master Furniture™

The Imported Furniture Specialist

ASSEMBLY INSTRUCTION

B1930

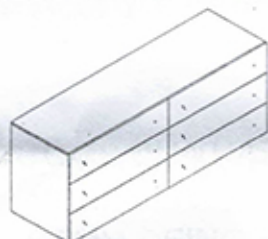
IMPORTANT NOTE : * PLACE ALL PARTS ON A CLEAN AND SMOOTH SURFACE SUCH AS A RUG OR CARPET TO AVOID THE PARTS FROM BEING SCRATCHED
* KINDLY FOLLOW THE ASSEMBLY INSTRUCTIONS STEP BY STEP
* DO NOT TIGHTEN ALL SCREWS UNTIL THE BED IS FULLY SET - UP
* SUPPORT LEGS MUST BE FITTED TO THE BED TO AVOID DISTORTION OF THE FRAME SUPPORT LEGS MUST BE IN A VERTICAL POSITION AT ALL TIME
* WHEN MOVING YOUR FULLY ASSEMBLED BED, YOU MUST FIRST REMOVE THE MATTRESS AND LIFT THE FRAME INTO POSITION . TAKE CARE WHEN LIFTING AND ALWAYS HAVE TWO PEOPLE HANDLING THE BED . PLEASE DO NOT DRAG THE BED AS THIS WILL CAUSE DAMAGE TO THE CENTRAL SUPPORT LEGS AND SUPPORT BAR.



DRESSER AND MIRROR

Part lits

① DRESSER TOP 1PC



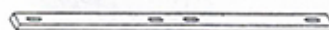
② LEG 5 PCS



③ MIRROR 1PC



④ MIRROR SUPPORT 2 PCS



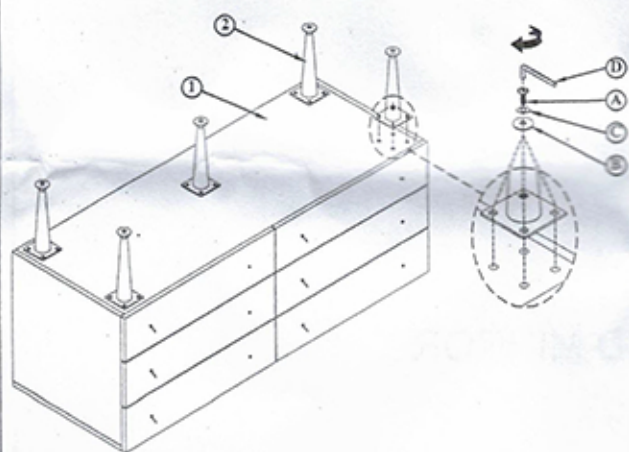
Hardware list 01

Label	Picture	Description	Qty	Label	Picture	Description	Qty
A		Bolt 5/16" * 20	20	D		Allen key	1
B		Flat washer	20	E		TIPPING-RESTRAINT	1SET
C		Spring washer	20				

Hardware list 02

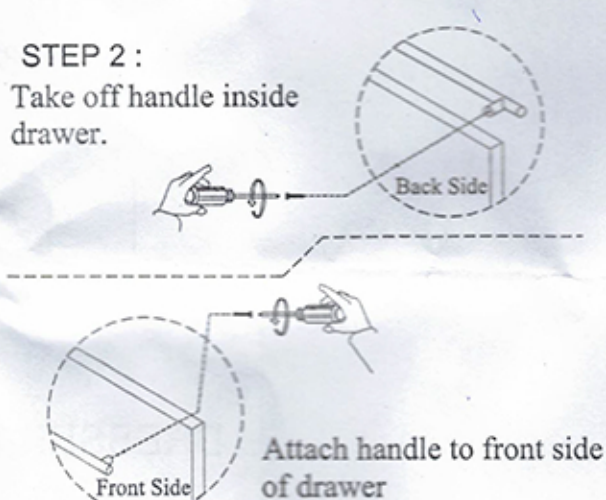
Label	Picture	Description	Qty	Label	Picture	Description	Qty
F		Bolt 5/16" * 30	4	N		Spring washer	8
G		Bolt 5/16" * 50	4	M		Allen key	1
H		Flat washer	8				

STEP 1 : Assembly the Chest Top and Leg.

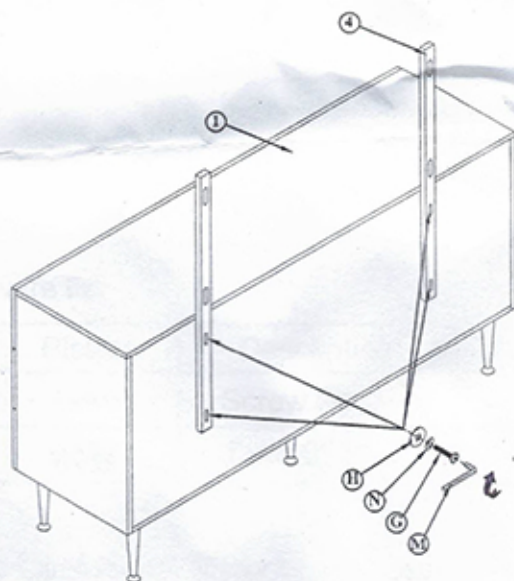


STEP 2 :

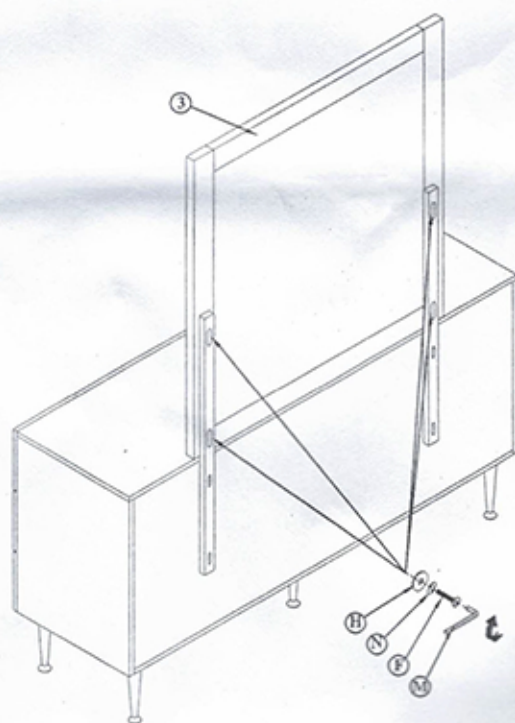
Take off handle inside drawer.



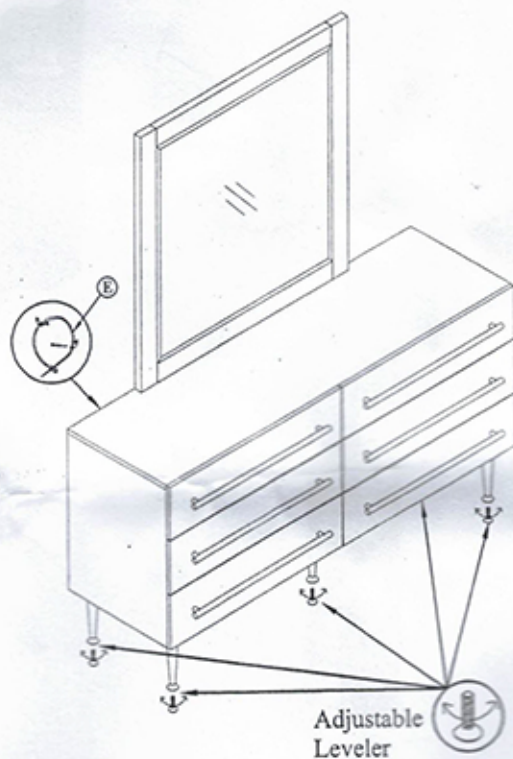
STEP 3 : Attach Mirror Support to Dresser back using Flat Washer (H), Spring Washer (N), Allen Bolt (G).



STEP 4 : Carefully put Mirror on Dresser top and attach to Mirror support using Flat Washer (H), Spring Washer (N), Allen Bolt (F).



STEP 5 : Use adjustable leveler.



STEP 6 : Assembly is complete.

